

PRIMARY JAW CRUSHER
AVAILABLE UPTO PRODUCTION
CAPACITY **700 TONS PER HOUR**



EXTRA HEAVY DUTY PRIMARY JAW CRUSHERS



MOD.

**PRIMARY
JAW CRUSHER
PJC**

An ISO 9001 Company



International Standards
Certifications
Lic. No. QAC/R91/0391

PRIMARY JAW CRUSHERS (PJC)



An ISO 9001 Company



APPLICATION :

MARSMAN® Primary Jaw Crushers are ideally suited for crushing of hard granite stone, black trap rock, river gravel, lime stone, coal, iron ore, etc. at primary stage with maximum output capacity.

BODY : The body is made from tested M.S.Plates. It is fabricated with horizontal and vertical ribs for strength and sturdiness, the body is annealed & stress relieved by heat treatment process to reduce the chance of the body getting cracked.

SWINGING LEVER : The swinging lever (pitman) is fabricated out of M.S.Plates with high tensile strength and it is annealed by heat treatment process and then it is precision machined for smooth crushing stroke.

TOGGLE PLATES & TOGGLE BEARINGS : For equal balance and load distribution the crank shaft is centrally fitted on cast steel toggle bearings. The cast steel toggle bearings withstand excessive wear & tear and convey correct crushing stroke.

Taper wedge cylinder (CSS Setting cylinder)

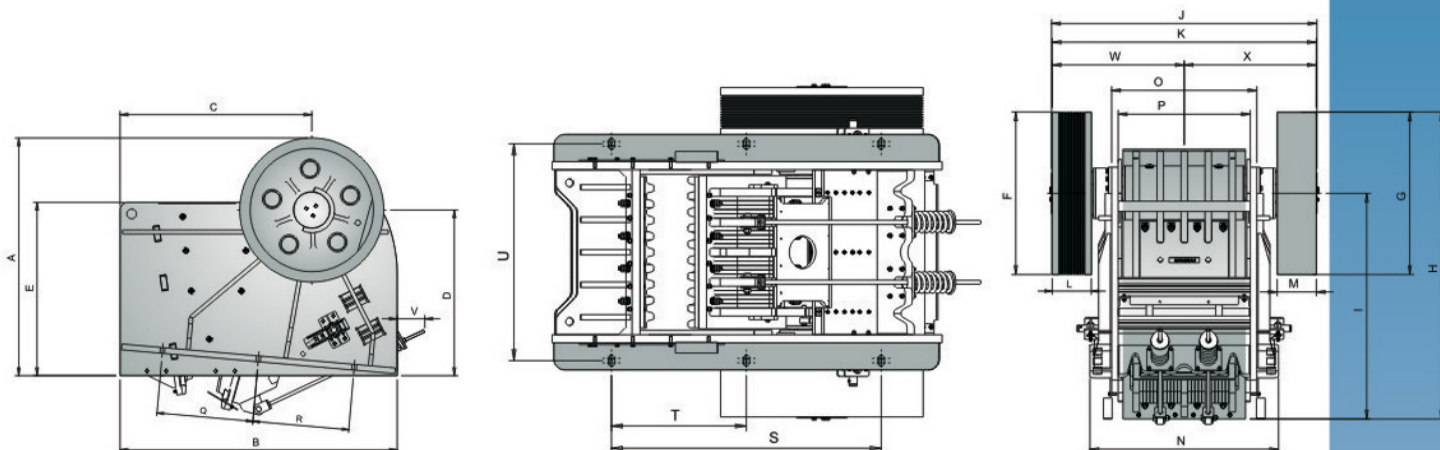
For changing the CSS of crusher, two cylinders are used for closed setting of Jaws along with hydraulic power pack in model CHY 30" X 15" / 36" X 24" / 56" X 48"

JAW PLATES & SIDE PLATES : The jaw plates are made of high tensile manganese steel. One jaw is fixed and the other jaw is fitted on swinging lever. The side plates are of close fitting type which prevent any wear to the body, which is made out of high grade manganese steel.

CRANK SHAFT & BEARING : The crank shaft is made of forged steel and fitted in heavy duty spherical double roller bearings which ensures smooth operation. The bearings are fitted on both sides of the crank shaft and two in swinging lever, which are well sealed against possible entry of dust and moisture by labyrinth seals. For lubrication grease nipples are fitted at appropriate places.

FLYWHEELS : Heavy duty cast iron flywheels are fitted on both the ends of crank shaft. These flywheels are machined all over, counter weight fitted and balanced to ensure steady crushing force.

WARRANTY : **MARSMAN** Jaw Crushers are warranted for ONE YEAR against manufacturing defects. However, the warranty does not cover breakdowns under normal wear & tear or due to misuse / mistake made by operator.



DIMENSION

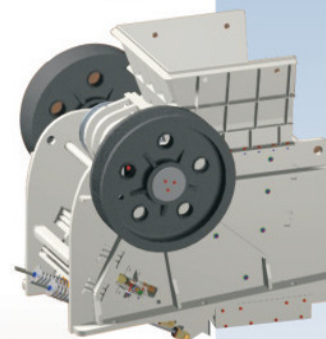
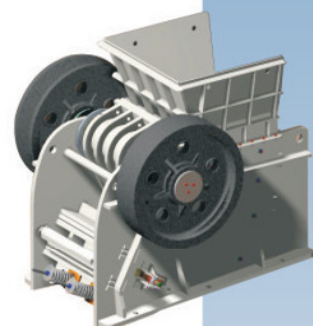
MODEL	SIZE		A	B	C	D	E	F	G	H	J	K	L	M	N	O	P	Q	R	S	T	U	V
C 2415	24" x 15"	INCHES	64	43	45	45	30	30	6	37	60	37	60	7.5	148MM	66	44	31	27	37	48	24	24
CHY 3015	30" x 15"	INCHES	70	44	41	41	35	35	9	37	57	37	57	11	148 MM	71	51	37	33	44	56	28	--
C 3020	30" x 20"	INCHES	70	46	41	41	35	35	9	43	63	43	63	12	148 MM	71	51	37	33	44	56	28	--
CHY 3624	36" x 24"	INCHES	83	55	47	46	43	43	12	52	76	52	76	8	180 MM	87	59	43	39	51	48	24	--
C 4236	42" x 36"	INCHES	98	73	60	58	51	51	17	63	93	63	93	15	195 MM	100	66	50	46	59	71	24	24
C 4433	44" x 33"	INCHES	94	70	60	58	52	52	16	60	90	60	90	16	196 MM	102	68	52	48	61	70	25	25
C 4838	48" x 38"	INCHES	98	73	60	58	54	54	17	63	93	63	93	17	196 MM	103	68	54	50	62	72	26	26
CHY 5648	56" x 48"	INCHES	121	142	98	80	89	74	74	139	120	120	18	18	86	66	60	49	49	98	49	79	14

SPECIFICATION

JAW CRUSHER		AVERAGE CAPACITY IN TONS/HR. WITH JAW SETTING (CLOSED SETTINGS)														MOTOR HP	M/C. RPM	APPROX. WEIGHT (KGS)
INCHES	MM	1"	1½"	2"	2½"	3"	3½"	4"	5"	6"	7"	8"	10"	12"				
		25	38	50	63	75	90	100	125	150	175	200	250	300				
24" x 15"	610 x 381	28	33	40	48	55	62	--	--	--	--	--	--	--	40	280	7200	
30" x 15"	762 x 380	--	--	50	63	70	80	90	--	--	--	--	--	--	60	280	8200	
30" x 20"	750 x 500	--	--	--	65	75	85	95	110	140	150	200	--	--	75	280	12000	
36" x 24"	914 x 610	--	--	--	--	80	100	125	150	200	250	275	--	--	100	260	14000	
44" x 33"	1100 x 825	--	--	--	--	100	150	175	200	250	300	350	--	--	150	240	22500	
42" x 36"	1066 x 914	--	--	--	--	--	160	180	200	260	300	350	--	--	150	240	23800	
48" x 38"	1200 x 950	--	--	--	--	--	--	200	225	280	350	450	500	--	210	240	32000	
56" x 48"	1425 x1220	--	--	--	--	--	--	--	--	--	--	500	600	700	335	180	51000	

Note :

- (a) The output in tons indicated above is based on average hard dry quartz weighing at least 1.6 tons/m³ when crushed and on continuous feed of graded sizes with fines removed.
 (b) Capacities may vary by 25% depending on type of rock, gradation and method of feeding.
 (c) Where no capacity rating is given in the table, it is generally not economical to operate at such a setting.



Factory View



Other Product Range



Mobile Crushing Plants



Primary Jaw Crusher



Secondary Jaw Crusher



Horizontal Shaft Impact Crusher



Grizzly Feeders



Stationary Crushing Plants



Vibrating Screen



Crushing & Screening Plant

Note : The design of MARSMAN Mobile Jaw Crushers is subject to change / alteration / modification without any notice.

MANUFACTURED BY:



Head Office :

N-16, M.I.D.C. Indl. Area, Ambad, Nashik - 422 010. (M.S.) INDIA

Tel. : +91-253-2382940. Fax : +91-253-2380272.

E-Mail : sales@marsmanltd.net, info@marsmanltd.net

Website : www.marsmanltd.net

Works:

Unit I : Gat. No. 581/582, At Post Janori, 10th Mile, Ozar, Mumbai-Agra Road, Nashik - 422 206. (M.S.) INDIA.

Unit II : Plot No. 712, G.I.D.C., Savli, Manjara Dist. Parada 210 375. (Gujarat) INDIA.

Unit III : Plot No. 712, G.I.D.C., Savli, Manjara Dist. Parada 210 375. (Gujarat) INDIA.